

Laboratory-based Virology Weekly Report

Week 13 ending 30 March 2025

The laboratory-based surveillance for influenza and common respiratory viruses is carried out all-year-around by the New Zealand virus laboratory network consisting of the WHO National Influenza Centre (NIC) at ESR and six hospital laboratories in Auckland (2), Waikato, Wellington, Christchurch and Dunedin. This laboratory network tests specimens ordered by clinicians for hospital inpatients and outpatients during normal clinical practice (serving ~70% of the New Zealand population). In addition, this laboratory network also conducts testing for public health surveillance, including SARI, ILI and WellKiwis (i.e. SHIVERS) cohort surveillance.

Caution is needed in the interpretation:

- 1) Sample collection is ordered by clinicians based on clinical judgement for patient management, rather than a systematic sampling approach for surveillance;
- 2) The number of laboratory tests can be influenced by testing priorities and demands, reagent and resource availability;
- 3) Testing technology and instruments evolve over the years which may have contributed to improved sensitivity for detection in recent years.

Tables and Figures below show the weekly influenza and common non-influenza viruses reported from the laboratory network in 2025. The latest information on COVID-19 cases is available on the Ministry of Health website [here](#)

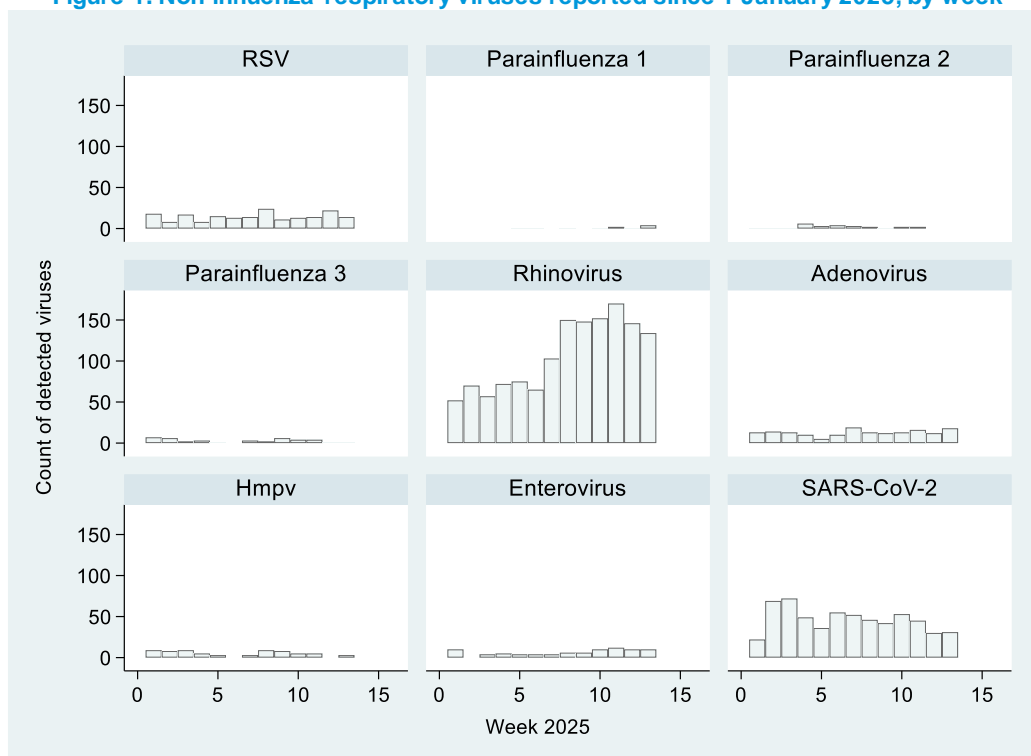
Table 1. Influenza respiratory viruses reported since 1 January 2025

<i>Influenza viruses</i>	Total
No. of positive specimens	740
Influenza A	626
A (not subtyped)	414
A(H1N1)pdm09	99
A(H1N1)pdm09 by PCR	99
A/Victoria/4897/2022 (H1N1)pdm09-like	0
A(H3N2)	113
A(H3N2) by PCR	113
A/Thailand/8/2022 (H3N2)-like	0
Influenza B	114
B (lineage not determined)	106
B/Yamagata lineage	0
B/Yamagata lineage by PCR	0
B/Phuket/3073/2013-like	0
B/Victoria lineage	8
B/Victoria lineage by PCR	8
B/Austria/1359417/2021-like	0

Table 2. Non-influenza respiratory viruses reported since 1 January 2025

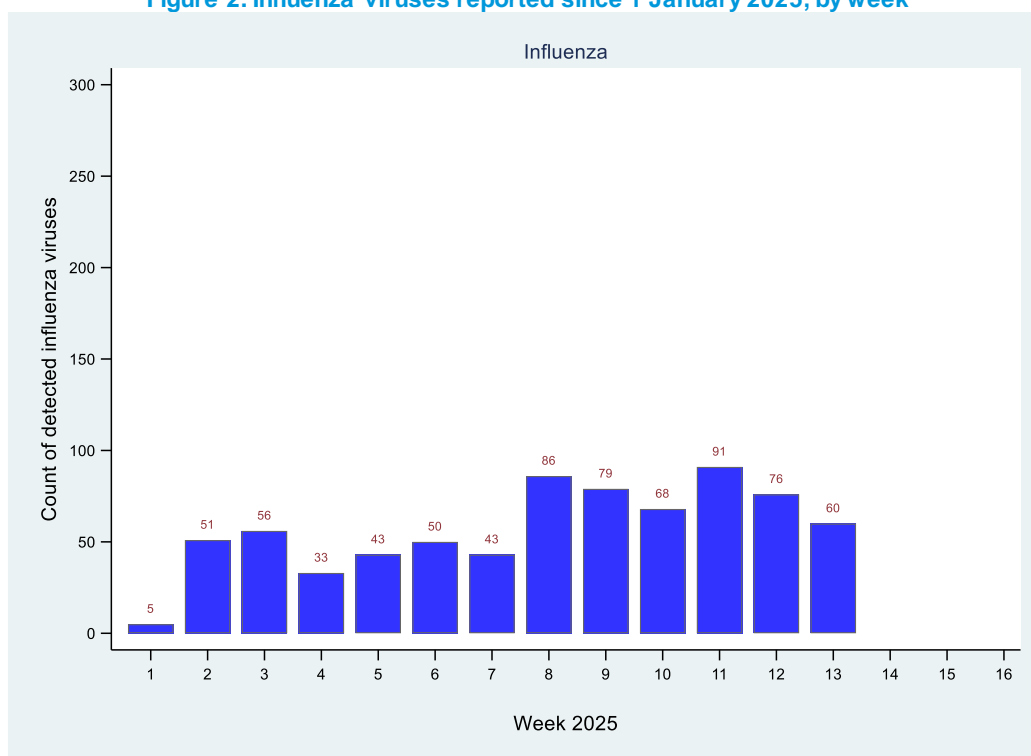
<i>Non-influenza respiratory viruses</i>	Total
No. of positive viruses	2584
SARS-CoV-2	602
Respiratory syncytial virus (RSV)	191
Parainfluenza 1 (PIV1)	11
Parainfluenza 2 (PIV2)	26
Parainfluenza 3 (PIV3)	40
Rhinovirus (RV)	1394
Adenovirus (AdV)	168
Human metapneumovirus (hMPV)	67
Enterovirus	85

Figure 1. Non-influenza respiratory viruses reported since 1 January 2025, by week



Numbers for recent weeks are updated due to time lag in receiving laboratory test results.

Figure 2. Influenza viruses reported since 1 January 2025, by week



This weekly report is compiled by ESR. For more information please contact:

Tim Wood: T: +64 4 529 0611 E: Tim.Wood@esr.cri.nz

Sue Huang: T: +64 4 529 0606 E: Sue.Huang@esr.cri.nz