

Laboratory-based Virology Weekly Report

Week 43 ending 27 October 2024

The laboratory-based surveillance for influenza and common respiratory viruses is carried out all-year-around by the New Zealand virus laboratory network consisting of the WHO National Influenza Centre (NIC) at ESR and six hospital laboratories in Auckland (2), Waikato, Wellington, Christchurch and Dunedin. This laboratory network tests specimens ordered by clinicians for hospital inpatients and outpatients during normal clinical practice (serving ~70% of the New Zealand population). In addition, this laboratory network also conducts testing for public health surveillance, including SARI, ILI and WellKiwis (i.e. SHIVERS) cohort surveillance.

Caution is needed in the interpretation:

- 1) Sample collection is ordered by clinicians based on clinical judgement for patient management, rather than a systematic sampling approach for surveillance;
- 2) The number of laboratory tests can be influenced by testing priorities and demands, reagent and resource availability;
- 3) Testing technology and instruments evolve over the years which may have contributed to improved sensitivity for detection in recent years.

Tables and Figures below show the weekly influenza and common non-influenza viruses reported from the laboratory network in 2024. The latest information on COVID-19 cases is available on the Ministry of Health website [here](#)

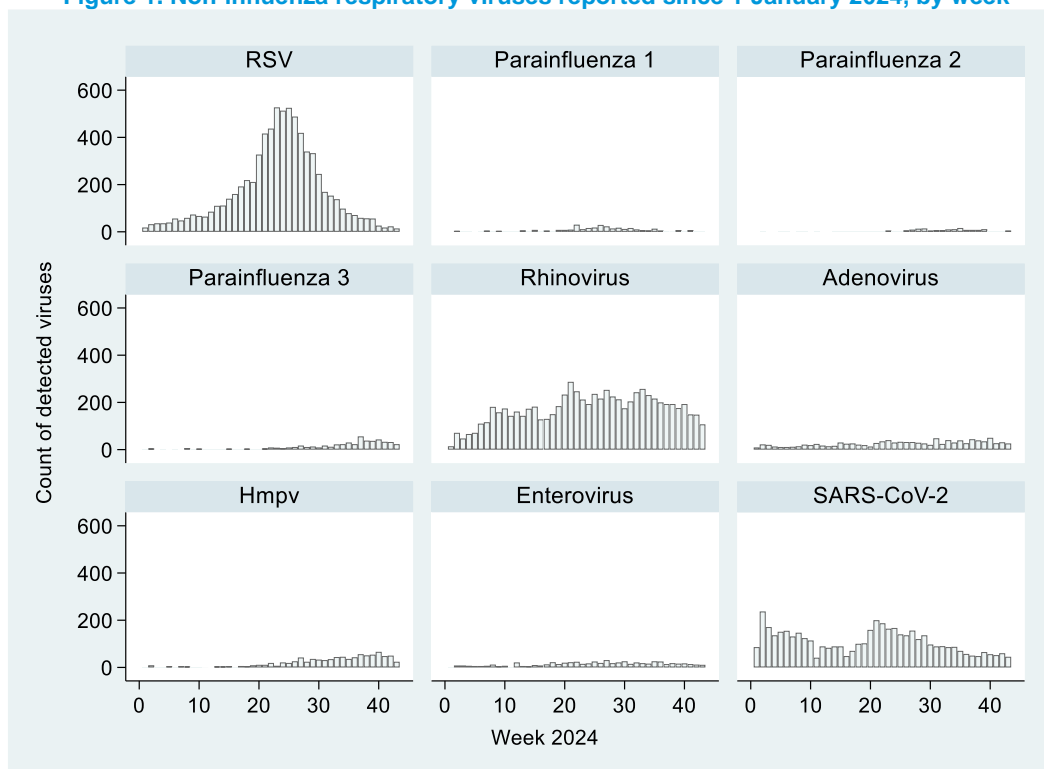
Table 1. Influenza respiratory viruses reported since 1 January 2024

<i>Influenza viruses</i>	Total
No. of positive specimens	11724
Influenza A	11536
A (not subtyped)	8316
A(H1N1)pdm09	957
A(H1N1)pdm09 by PCR	845
A/Victoria/4897/2022 (H1N1)pdm09-like	112
A(H3N2)	2263
A(H3N2) by PCR	2157
A/Thailand/8/2022 (H3N2)-like	106
Influenza B	188
B (lineage not determined)	173
B/Yamagata lineage	0
B/Yamagata lineage by PCR	0
B/Phuket/3073/2013-like	0
B/Victoria lineage	15
B/Victoria lineage by PCR	6
B/Austria/1359417/2021-like	9

Table 2. Non-influenza respiratory viruses reported since 1 January 2024

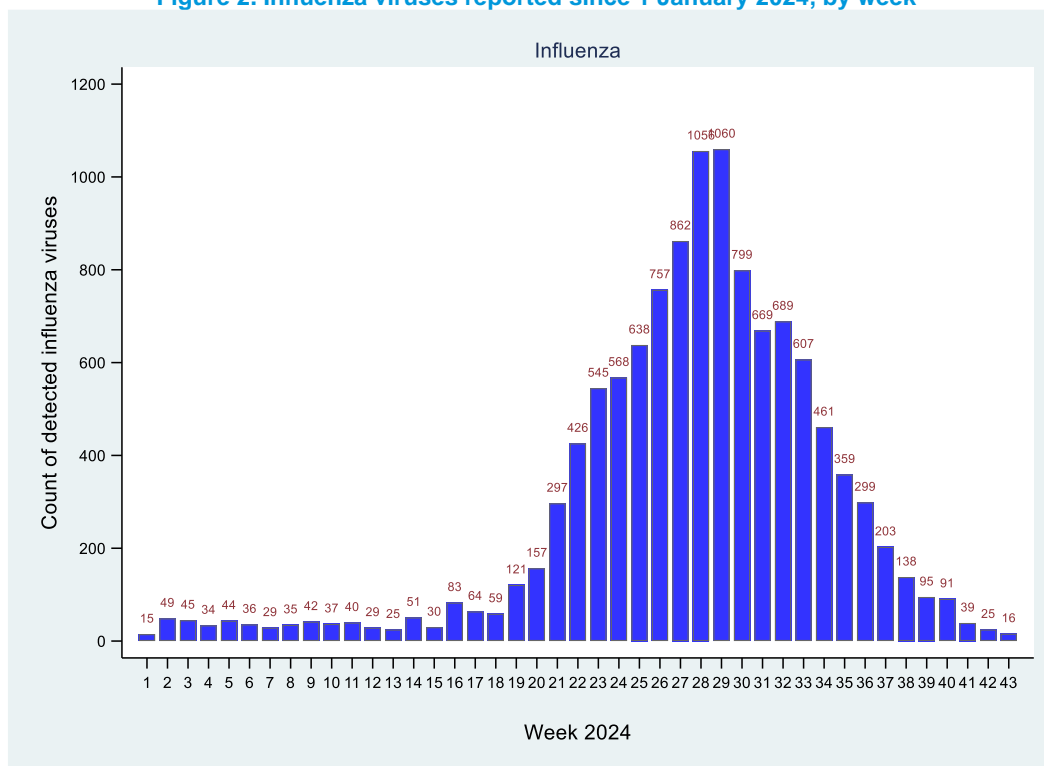
<i>Non-influenza respiratory viruses</i>	Total
No. of positive specimens	18387
SARS-CoV-2	4680
Respiratory syncytial virus (RSV)	7287
Parainfluenza 1 (PIV1)	332
Parainfluenza 2 (PIV2)	180
Parainfluenza 3 (PIV3)	530
Rhinovirus (RV)	7402
Adenovirus (AdV)	1122
Human metapneumovirus (hMPV)	903
Enterovirus	631

Figure 1. Non-influenza respiratory viruses reported since 1 January 2024, by week



Numbers for recent weeks are updated due to time lag in receiving laboratory test results.

Figure 2. Influenza viruses reported since 1 January 2024, by week



This weekly report is compiled by ESR. For more information please contact:

Tim Wood: T: +64 4 529 0611 E: Tim.Wood@esr.cri.nz

Sue Huang: T: +64 4 529 0606 E: Sue.Huang@esr.cri.nz