

## Laboratory-based Virology Weekly Report

Week 47 ending 24th November 2024

The laboratory-based surveillance for influenza and common respiratory viruses is carried out all-year-around by the New Zealand virus laboratory network consisting of the WHO National Influenza Centre (NIC) at ESR and six hospital laboratories in Auckland (2), Waikato, Wellington, Christchurch and Dunedin. This laboratory network tests specimens ordered by clinicians for hospital inpatients and outpatients during normal clinical practice (serving ~70% of the New Zealand population). In addition, this laboratory network also conducts testing for public health surveillance, including SARI, ILI and WellKiwis (i.e. SHIVERS) cohort surveillance.

Caution is needed in the interpretation:

- 1) Sample collection is ordered by clinicians based on clinical judgement for patient management, rather than a systematic sampling approach for surveillance;
- 2) The number of laboratory tests can be influenced by testing priorities and demands, reagent and resource availability;
- 3) Testing technology and instruments evolve over the years which may have contributed to improved sensitivity for detection in recent years.

Tables and Figures below show the weekly influenza and common non-influenza viruses reported from the laboratory network in 2024. The latest information on COVID-19 cases is available on the Ministry of Health website [here](#)

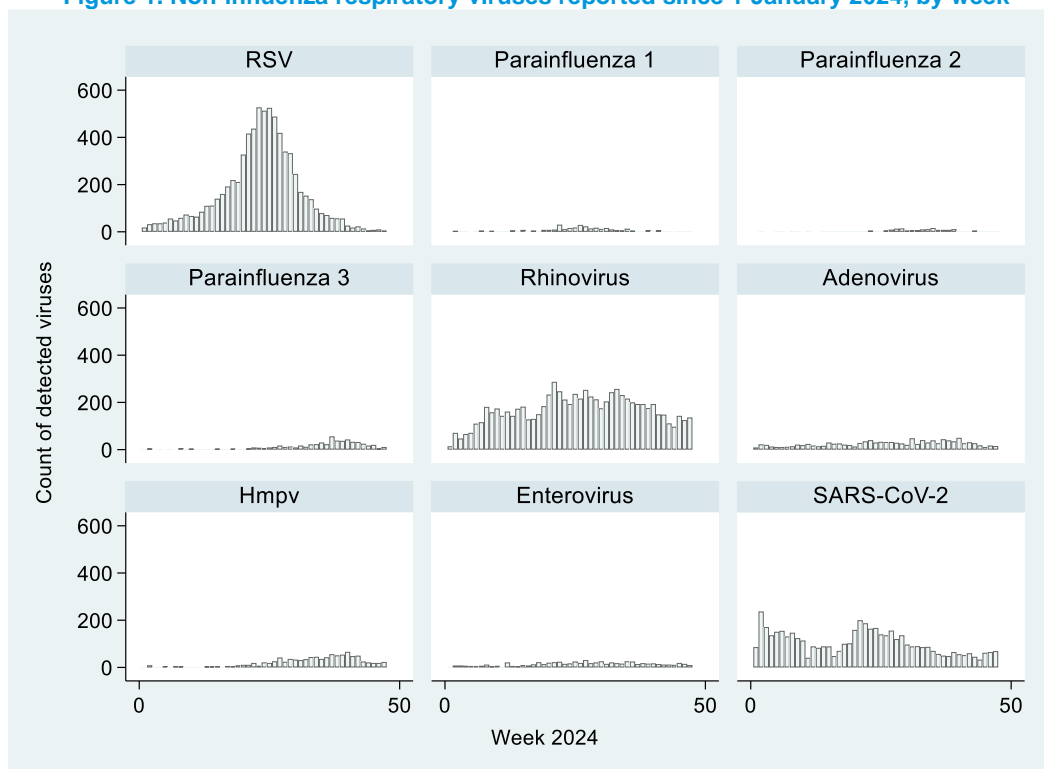
**Table 1. Influenza respiratory viruses reported since 1 January 2024**

<i>Influenza viruses</i>	Total
No. of positive specimens	11790
<b>Influenza A</b>	<b>11592</b>
A (not subtyped)	8340
A(H1N1)pdm09	958
A(H1N1)pdm09 by PCR	846
A/Victoria/4897/2022 (H1N1)pdm09-like	112
A(H3N2)	2294
A(H3N2) by PCR	2188
A/Thailand/8/2022 (H3N2)-like	106
<b>Influenza B</b>	<b>198</b>
B (lineage not determined)	183
B/Yamagata lineage	0
B/Yamagata lineage by PCR	0
B/Phuket/3073/2013-like	0
B/Victoria lineage	15
B/Victoria lineage by PCR	6
B/Austria/1359417/2021-like	9

**Table 2. Non-influenza respiratory viruses reported since 1 January 2024**

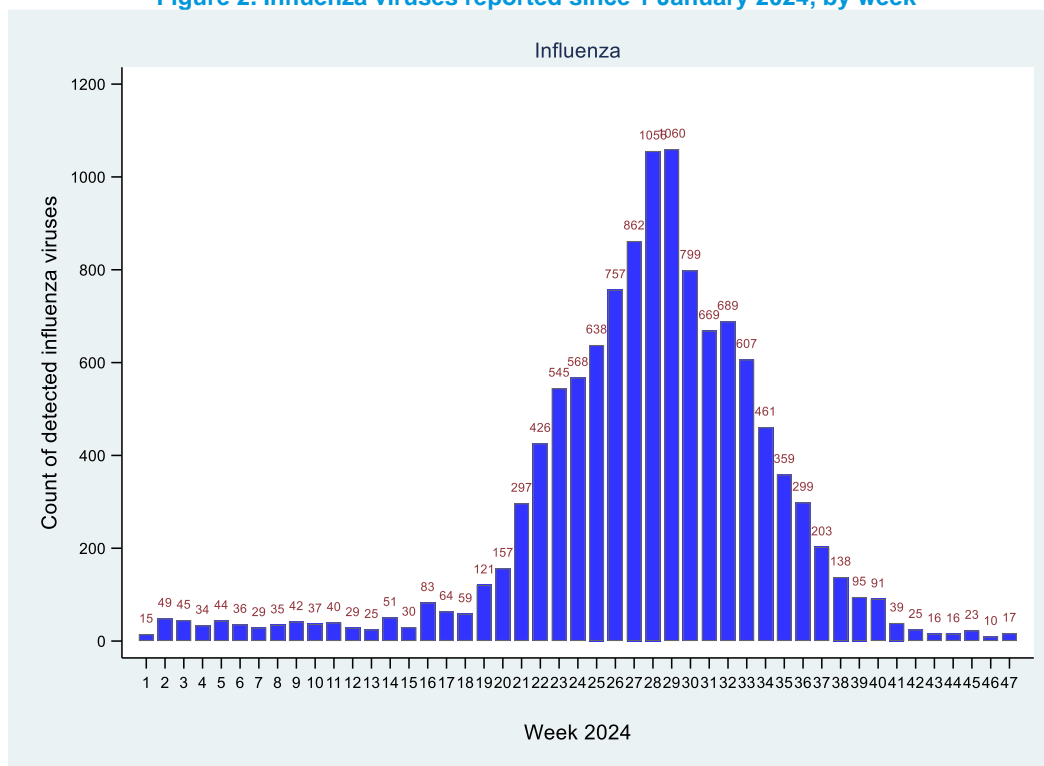
<i>Non-influenza respiratory viruses</i>	Total
No. of positive specimens	19189
SARS-CoV-2	4909
Respiratory syncytial virus (RSV)	7316
Parainfluenza 1 (PIV1)	338
Parainfluenza 2 (PIV2)	186
Parainfluenza 3 (PIV3)	585
Rhinovirus (RV)	7907
Adenovirus (AdV)	1184
Human metapneumovirus (hMPV)	986
Enterovirus	687

**Figure 1. Non-influenza respiratory viruses reported since 1 January 2024, by week**



Numbers for recent weeks are updated due to time lag in receiving laboratory test results.

**Figure 2. Influenza viruses reported since 1 January 2024, by week**



This weekly report is compiled by ESR. For more information please contact:

Tim Wood: T: +64 4 529 0611 E: [Tim.Wood@esr.cri.nz](mailto:Tim.Wood@esr.cri.nz)

Sue Huang: T: +64 4 529 0606 E: [Sue.Huang@esr.cri.nz](mailto:Sue.Huang@esr.cri.nz)