

Laboratory-based Virology Weekly Report

Week 24 ending 15 June 2025

The laboratory-based surveillance for influenza and common respiratory viruses is carried out all-year-around by the New Zealand virus laboratory network consisting of the WHO National Influenza Centre (NIC) at ESR and six hospital laboratories in Auckland (2), Waikato, Wellington, Christchurch and Dunedin. This laboratory network tests specimens ordered by clinicians for hospital inpatients and outpatients during normal clinical practice (serving ~70% of the New Zealand population). In addition, this laboratory network also conducts testing for public health surveillance, including SARI, ILI and WellKiwis (i.e. SHIVERS) cohort surveillance. Furthermore, some of untyped enteroviruses, adenoviruses and respiratory syncytial viruses are referred to ESR for further typing.

Caution is needed in the interpretation:

- 1) Sample collection is ordered by clinicians based on clinical judgement for patient management, rather than a systematic sampling approach for surveillance;
- 2) The number of laboratory tests can be influenced by testing priorities and demands, reagent and resource availability;
- 3) Testing technology and instruments evolve over the years which may have contributed to improved sensitivity for detection in recent years.

Tables and Figures below show the weekly influenza and common non-influenza viruses reported from the laboratory network in 2025. The latest information on COVID-19 cases is available on the Ministry of Health website [here](#)

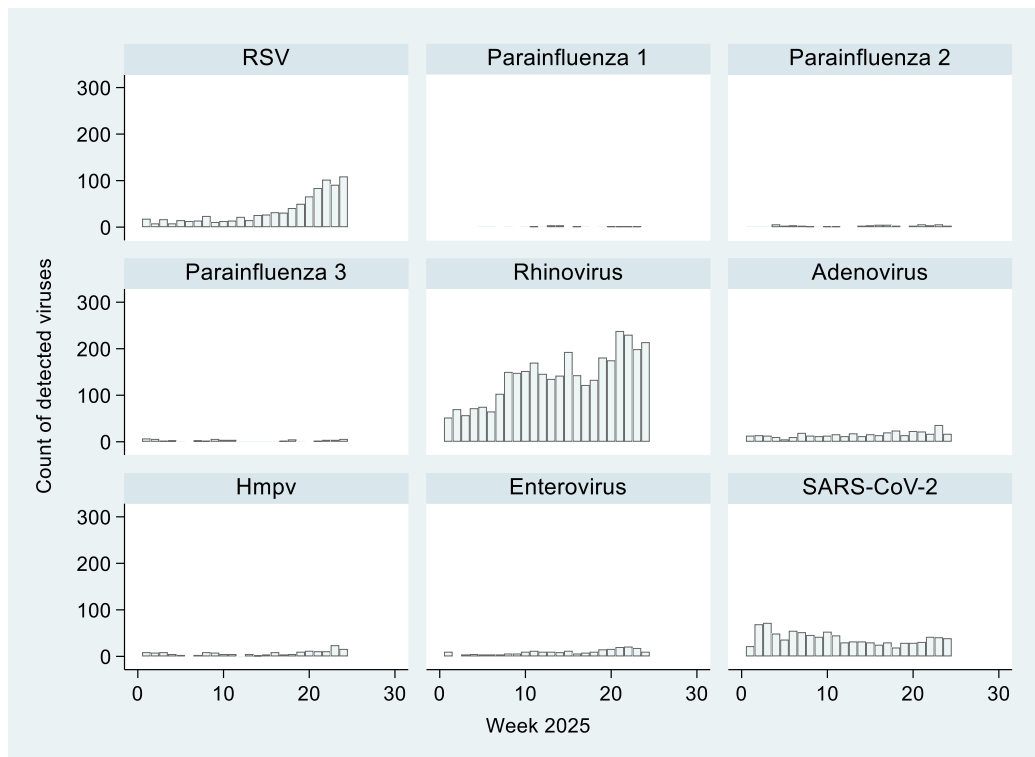
Table 1. Influenza respiratory viruses reported since 1 January 2025

<i>Influenza viruses</i>	Total
No. of positive specimens	2275
Influenza A	1705
A (not subtyped)	821
A(H1N1)pdm09	655
A(H1N1)pdm09 by PCR	655
A/Victoria/4897/2022 (H1N1)pdm09-like	0
A(H3N2)	229
A(H3N2) by PCR	229
A/Croatia/10136RV/2023 (H3N2)-like	0
Influenza B	570
B (lineage not determined)	516
B/Yamagata lineage	0
B/Yamagata lineage by PCR	0
B/Phuket/3073/2013-like	0
B/Victoria lineage	54
B/Victoria lineage by PCR	54
B/Austria/1359417/2021-like	0

Table 2. Non-influenza respiratory viruses reported since 1 January 2025

<i>Non-influenza respiratory viruses</i>	Total
No. of positive viruses	6119
SARS-CoV-2	950
Respiratory syncytial virus (RSV)	851
Parainfluenza 1 (PIV1)	27
Parainfluenza 2 (PIV2)	68
Parainfluenza 3 (PIV3)	67
Rhinovirus (RV)	3365
Adenovirus (AdV)	383
Human metapneumovirus (hMPV)	178
Enterovirus	230

Figure 1. Non-influenza respiratory viruses reported since 1 January 2025, by week



Numbers for recent weeks are updated due to time lag in receiving laboratory test results.

Figure 2. Influenza viruses reported since 1 January 2025, by week

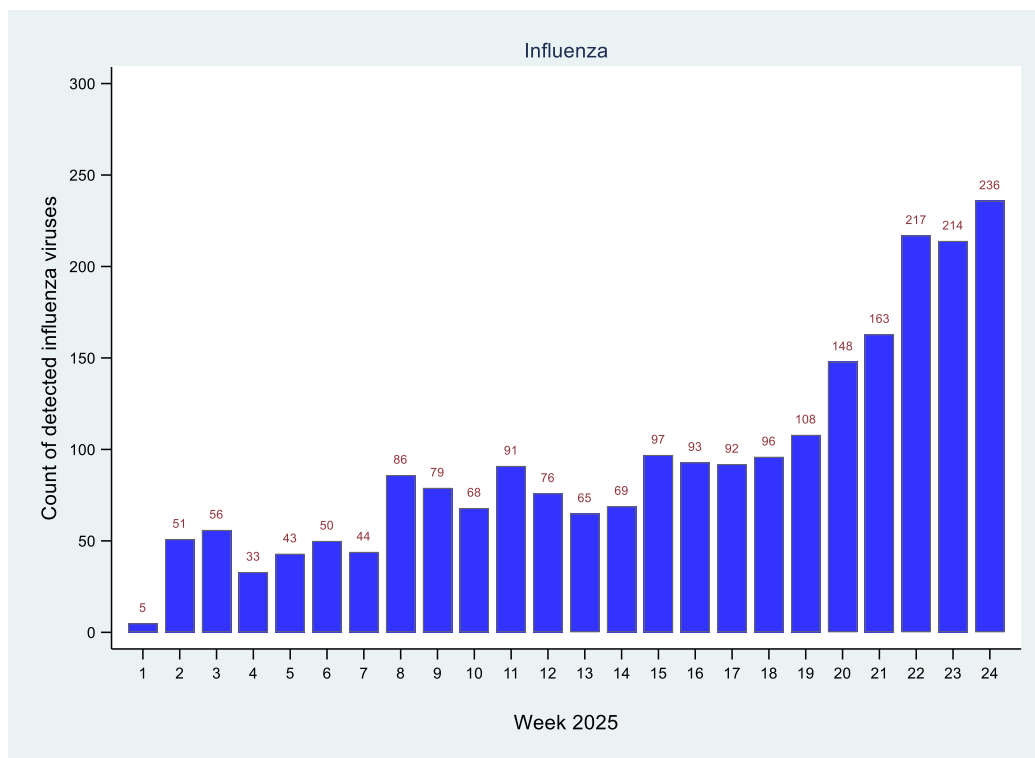


Table 3. Number of adenovirus types since 1 January 2025

<i>Adenovirus type</i>	Month											
	Jan	Feb	Mar	Apr	May	Jun	Jul	Aug	Sep	Oct	Nov	Dec
Adenovirus type 1				3								
Adenovirus type 2				2								
Adenovirus type 4					2							
Adenovirus type 37		2										
Adenovirus type 40				1								
Adenovirus type 41	8	3	2	4								

Table 4. Number of enterovirus types since 1 January 2025

<i>Enterovirus type</i>	Month											
	Jan	Feb	Mar	Apr	May	Jun	Jul	Aug	Sep	Oct	Nov	Dec
Coxsackie A virus type 6	8	5	21	10	1							
Coxsackie A virus type 8			1									
Echovirus type 11			2									

Table 5. Number of respiratory syncytial virus types reported since 1 January 2025

<i>RSV type</i>	Month											
	Jan	Feb	Mar	Apr	May	Jun	Jul	Aug	Sep	Oct	Nov	Dec
RSV A	3	1	1	11	16							
RSV B	2			7	15							

This weekly report is compiled by ESR. For more information please contact:

Tim Wood: T: +64 4 529 0611 E: Tim.Wood@esr.cri.nz

Sue Huang: T: +64 4 529 0606 E: Sue.Huang@esr.cri.nz